

# WINTER WILDLIFE WATCHING FESTIVAL

8 DAYS

BIAŁOWIEŻA FOREST  
& BIEBRZA MARSHES

*Join our fanatic nature enthusiasts crew  
at the height of winter. See the unscathed nature  
in the beautiful, snowy landscape.  
Listen to lectures by leading local researchers  
for an even greater insight.*



# WINTER WILDLIFE FESTIVAL

8 DAYS IN THE BIAŁOWIEŻA FOREST & BIEBRZA MARSHES

## HOTEL & FOOD INCLUDED

Pay **just €700 for 8 days!** This covers a comfortable hotel, food and transfer from/to Warsaw. You won't find a better price!

## GUIDED TRIPS ARE OPTIONAL

Join our guided trips offered several times a day or watch wildlife on your own thus composing your personal itinerary.

## AFFORDABLE PRICES AND NO CASH

Pay **as little as €40** for a guided trip. Only debit or credit cards are accepted so no cash is needed.

## OUTLINE ITINERARY IS VERY SIMPLE

**Day 1:** Join us in **Warsaw** by 13:00 and transfer to the **Białowieża Forest**

**Days 2-7:** Wildlife watching trips in the **Białowieża Forest, Siemianówka Lake and Biebrza Marshes** – do it yourself or join our guided trips and evening lectures.

**Day 8:** transfer to Warsaw, finish by 14:00

# WINTER WILDLIFE FESTIVAL

8 DAYS IN THE BIAŁOWIEŻA FOREST & BIEBRZA MARSHES

**THIS IS BY FAR THE MOST AFFORDABLE AND FUN WAY TO JOIN WILDLIFE WATCHING TRIPS**

We will spend this week in the **Białowieża Primeval Forest**, in the far east of Poland, at the border with Belarus. This area holds the largest population of **wild European Bison as well as Wolves and Lynx** and we would love to show them to you during our dawn and dusk trips.



**Winter is the best time of the year for mammal watching** and furthermore, offers a fantastic snowy scenery. Of course we can't guarantee weather but we have planned this festival at the most reliable time.

Additionally, we will offer a two-day trip to the famous **Biebrza Marshes** to see **Elks (Moose)**, (seen well on all our previous trips!) as well as **Beavers and Otters** (much more difficult).

You will also get a chance to visit the **Strict Protection Area of the Białowieża National Park** for a few hours walk. We will have the permission to enter the core area of the forest, the Man and Biosphere Reserve and a **UNESCO World Heritage Site**. The pristine, natural forest of huge, centuries-old trees and home to the rarest **Black, White-backed and Three-toed Woodpeckers**.





# WINTER WILDLIFE FESTIVAL

8 DAYS IN THE BIAŁOWIEŻA FOREST & BIEBRZA MARSHES

Although there are few birds around at that time, you will have a chance to get some great views of winter rarities like the mentioned **woodpeckers** but also a **White-tailed Eagle, Rough-legged Buzzard, Great Grey Shrike, Hawfinch** or **Waxwing**.



We have also asked three leading local researchers to join us in the evenings and give **in-depth lectures on the Białowieża Forest and its wildlife**.

Finally, we will also point out **several options for self guided walks** so you can see the forest at your own pace and have some private time. Our **experienced and enthusiastic nature guides** will point out all the wildlife around as well as keep you informed about the region's history and ethnic diversity.



We will stay at a **comfortable National Park lodge** located right in the centre of the 19th century park. The restaurant offers **quality, traditional Polish food** and numerous craft drinks. As usual, we will finish with a **traditional Polish campfire** to add a unique and unforgettable taste to your wildlife holiday.

# WINTER WILDLIFE FESTIVAL

8 DAYS IN THE BIAŁOWIEŻA FOREST & BIEBRZA MARSHES

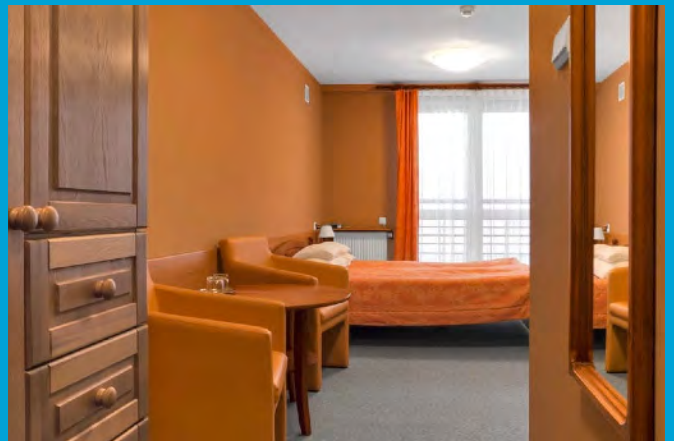
## THE MAIN PRICE INCLUDES ACCOMMODATION, HB FOOD AND TRANSFER

The festival starts and ends in Warsaw. Participants arrive at Warsaw at their own expense, preferably the day before the festival, 17 Jan 2020 or on an early flight 18th Jan.

**We meet 18 January 2020 at 13:00** downtown Warsaw **in front of the Palace of Culture and Science** and transfer to our lodge in Białowieża. If you arrive by train or a car – contact us for detailed directions.

The festival lodge in Białowieża is located right in the centre of the 19th century park, that the Russian Tsars laid out around their enormous castle-like shooting lodge. The park is well preserved with beautiful trees, a river and ponds where Beavers live. Behind the park lies the Strict Protection Area of the Białowieża National Park.

On the 8th day, we transfer you back to Warsaw. We plan to arrive by lunch time and drop you off at the Palace of Culture and Science or Warsaw WAW Airport by 14:00. **Basic participation costs include the transfer, accommodation, plentiful breakfasts and 3-course dinners.** If you feel like watching wildlife on your own – it's all you pay for. You will even receive a detailed map of the area and suggestions for self guided walks to help your personal exploration.





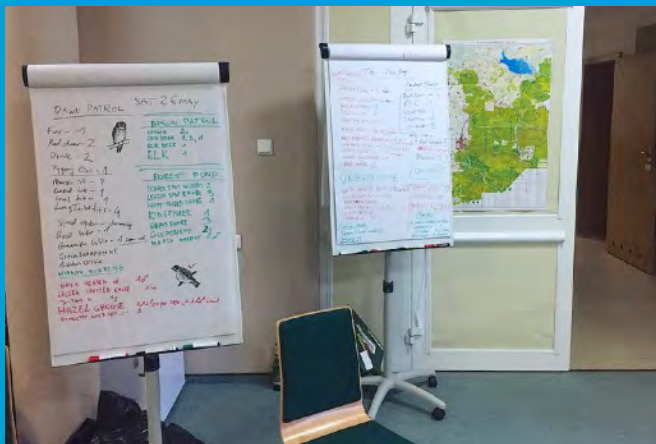
# WINTER WILDLIFE FESTIVAL

8 DAYS IN THE BIAŁOWIEŻA FOREST & BIEBRZA MARSHES

## WILDLIFE WATCHING TRIPS ARE OPTIONAL, CHARGED ON THE SPOT

**On the grounds of our lodge we will run the Festival's Office** where you will be able to find out and subscribe to our guided wildlife watching trips on a daily basis. We will offer at least 3-4 different trips each day according to current wildlife situation and weather. **These trips include transportation, guiding and all entry fees.**

**This way you compose your own itinerary** on the spot and are charged for the trips you choose, separately. Only debit or credit cards are accepted (Visa and MasterCard), so no cash is needed. All trips start and finish at the lodge.



# WINTER WILDLIFE FESTIVAL

8 DAYS IN THE BIAŁOWIEŻA FOREST & BIEBRZA MARSHES

## A VARIETY OF REASONABLY PRICED TRIPS WILL BE OFFERED

The trips will be priced according to their length and driving distance. **A typical trip is 3-4 hrs long and costs PLN 160-240 (€40-60).** There is no limit to the number of people taking part in a festival but our guided trips always run in small groups, 3-12 persons.

### The costs of a single trip always include:

- transport in a comfortable minibus
- guiding by an English speaking passionate naturalist
- all entrance fees and National Park tickets





# WINTER WILDLIFE FESTIVAL

8 DAYS IN THE BIAŁOWIEŻA FOREST & BIEBRZA MARSHES

## EXEMPLARY TRIPS

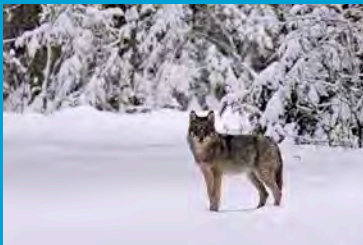
Below is a small selection of typical trips offered at the last Festival. According to the current wildlife situation and your suggestions we may offer additional short trips, even for single species or a historical tour of wooden villages.

**Our goal is to make the trips affordable to everyone** and we will do the uttermost to keep the prices as low as possible. Many trips will take place at dawn and dusk for best wildlife activity, leaving enough time in the day to rest.



### **Bison Safari, 2-3hrs**

A short walk and/or drive at dusk or dawn in search of wild European Bison. 100% success rate on our previous winter trips! Other likely species include Wild Boar, Red and Roe Deer, Red Fox or a Great Grey Shrike.



### **Wolf & Lynx Dawn and Dusk Patrol, 4hrs**

A drive and/or a walk at the best time of day for large mammals at some of our favourite forest patches. This is the trip that each year brings us some Wolf and Lynx sightings. But there is so much more to see!



### **UNESCO Site, 4-7 hrs**

A guided tour with the best local guides in the core area of the forest, the Strict Protection Area of the Białowieża National Park and a World Heritage Site. Pristine habitat and chances to see some of the rare Woodpeckers.



# WINTER WILDLIFE FESTIVAL

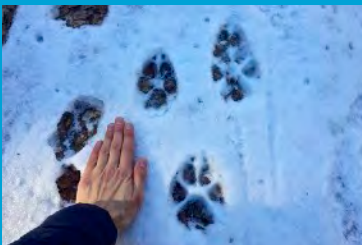
8 DAYS IN THE BIAŁOWIEŻA FOREST & BIEBRZA MARSHES

## EXEMPLARY TRIPS



### Woodpeckers, 4hrs

A drive around and short walks in various forest habitats to find as many different woodpeckers as possible. Likely species include Black, White-backed, Grey-headed, Three-toed, Great, Middle and Lesser Spotted Woodpeckers. Other birds also likely.



### Wildlife tracking course, 4hrs

A slow walk at one or more sites deep in the Białowieża forest tracking mammals. Our guide will point out all that there is to see and explain the basics of reading animal tracks. It is unbelievable how much you can read from footprints!



### Biebrza Marshes, 2 days, incl. hotel & food

Two days trip with an overnight stay at the famous Biebrza Marshes for an Elk (Moose) Safari plus chances of Beavers, Otters, American Minks, Red Foxes, White-tailed Eagles, Rough-legged Buzzards and more.



### Evening lectures, 1-2 hrs, admission free

We have asked three leading local scientists to join us in the evenings and give lectures on the situation of the Białowieża Forest and its wildlife. Isn't it a smart way to spend long winter evenings back at the lodge?

# WINTER WILDLIFE FESTIVAL

8 DAYS IN THE BIAŁOWIEŻA FOREST & BIEBRZA MARSHES

## ANYTHING STILL UNCLEAR?

SOME COMMON QUESTIONS ANSWERED

### **Q: Could you pick me up at the airport or a hotel on day 1 in Warsaw?**

No, we are sorry. We tried this in the previous years but it takes a few hours to pick everyone up and we would spend the whole day in the bus and at the airport, arriving in Białowieża late evening. Instead, we suggest that you take a taxi to the meeting point in the morning. This has proven to be a lot more efficient with a larger group.

### **Q: Can I join your trips without booking accommodation? (I will be in the area in these dates and have my own accommodation)**

Yes, the Festival is open to other visitors who just 'come by' but priority is given to our customers. You will only be allowed to join a given guided trip when there are enough spaces available.

### **Q: Can I easily communicate in English?**

Yes, the Festival language is English and all our guides speak it well. What we cannot guarantee, however, is that all the hotel staff are fluent. Therefore our staff will be there to assist you in a rare case that you may require help.

### **Q: Can I pay with a credit card?**

Yes, we accept VISA and MasterCard on the spot. In fact – we do not accept cash at all.

Not all the hotels and bars accept cards, though, so you may wish to have some PLN in cash to pay for your drinks, souvenirs etc. There is a cash machine in the Białowieża Village.

### **Q: Can I pay in EUR or GBP?**

Yes, but we don't accept cash. When you make a bank transfer to pay for the basic participation costs, we can accept EUR. When you pay for the guided trips on the spot, we only accept card payments and charge in PLN.

### **Q: I travel alone but wish to share a room. Is it possible?**

Yes, you may opt for a shared room option but in case we do not find you a room mate of the same sex, you will be charged an additional single room supplement.

It is a common practice here that hotels charge more for a single room and unfortunately, we cannot avoid this.